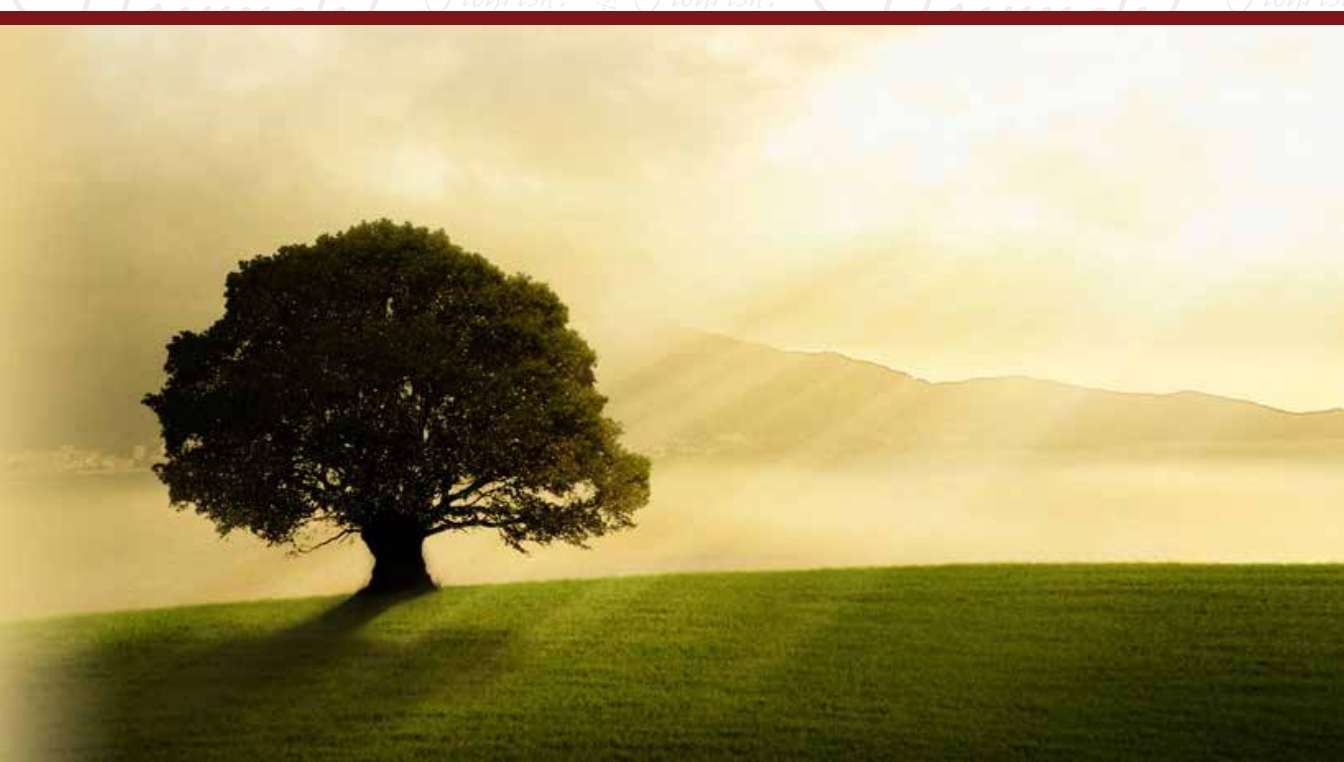


Flourish!

Newsletter




Rehoboth
Christian Ministries



September 2015

www.rehoboth.ab.ca

Board Chairman Update



Recently my wife and I participated in the annual Canadian Reformed Soccer Tournament being hosted in Coaldale. We packed up our family, and on the drive from Edmonton decided to stop in at the Rehoboth Gull Lake Camp to check out the new kitchen and mess hall facility. The new facility looked fantastic, and will serve the camp so well for many years to come. It is another step toward equipping the camp for more uses, and also will allow the camp to be used in non-summer months. The future of the camp is something on the board's agenda and one of our objectives is to see the camp become a three (or possibly four) season facility in the near future. After my write-up in the previous *Flourish!* newsletter, I received many comments on my photo! Apparently the "selfie" wasn't the best photo, and so I have included a family photo so you can get a truer picture of who I am (and more importantly – the family that supports me).

"What has the board been up to?" you may ask. Well, often in the summer months things quiet down, and this has been true this year as well. I'll provide a few brief highlights:

1. **Coaldale Pork Roast** – this annual fundraiser was once again a very big success. The board members attended the event this year, and got an opportunity to interact with the community and membership. On behalf of the board – a big "THANK-YOU" to those who worked tirelessly to organize and help at the event.

2. **Annual General Meeting** – the day after the Pork Roast, we had our AGM in Coaldale. It became clear that most people chose to attend the roast the night before, as membership representation at the meeting was very low. This is a concern for the board, and a trend we see across the province. I would encourage the membership to continue to make an effort to attend Rehoboth events, especially the AGM.
3. **Board Members** – at the AGM, two new board members were appointed: Alex Van Geest and Janet Postma. Both are from Central Alberta, and we are very excited to have them join the board and bring their skills and experiences to the board table. If you see them (or any of the board members) in your day to day interactions, please thank them for volunteering and contributing. We also bid farewell to Sherry Tenbrinke who served on the Board for seven years! Sherry has a heart for service, and we thank her for dedication and commitment and passion to Rehoboth.
4. **Audit Committees** – in the spring/summer, the board's Audit Committee meets to review the finances of the Association and the Foundation. With thankfulness, we can say that the finances were confirmed by the auditors to be in sound fiscal condition; we praise our God for these blessings.
5. **Governance** – a great focus of the board currently is reviewing how we govern the organization. To facilitate this work, we had Ideal Consulting work with us through a policy review, bylaws review, strategic planning, etc. A significant outcome of this work was an updated Vision, Mission, Values, and Beliefs. These are now posted on the Rehoboth website (www.Rehoboth.ab.ca); if you have any feedback please send me a quick note at president@rehoboth.ab.ca.

As September approaches, we have our board meeting slated to be held at the camp facility. This is done annually, and provides an opportunity to immerse ourselves in the camp atmosphere, and also to interact with the Joyful Noise Choir that will be there. We express our thanks to them for their work in promoting Rehoboth, and supporting Rehoboth each and every year.

In closing, I want to emphasize that our membership continues to identify Rehoboth as an organization that continues to set us apart. When we met with the Government of Alberta accreditation team, they were impressed by our membership base, and reiterated to us

how important this was to continue to strongly represent Rehoboth and our Vision, Mission, Values and Beliefs to government. Please take the time to renew your membership this October, and encourage your family members, your kids (we need the next generation to continue to help us flourish), and your church community to join and support Rehoboth as we serve people with disabilities and help them flourish.

In Christ, and on behalf of the RCM Board,
Brian de Haan
president@rehoboth.ab.ca

VISION

By the grace of God, all persons with disabilities have a meaningful and dignified place in society where they can live, contribute and fellowship with others.

MISSION

Rehoboth conveys God's love to persons with disabilities and their families by making room for them and enabling them to flourish.

VALUES

Rehoboth values are Christ-like, including: Serving; Compassion; Dignity; Inclusivity; Integrity; Commitment

BELIEFS

We believe:

- That Rehoboth is diligent in using the power of prayer
- That Rehoboth serves God through serving its clients
- That the work of Rehoboth is blessed by God
- That Rehoboth is deliberate in applying and nurturing the God-given talents of everyone involved.



ARTIST NEEDED

Rehoboth is looking for an artist to reproduce the sunrise mural that was on the south wall of the old mess hall in the new mess hall. If you are interested or know someone who may be contact Kelvin Van Dasselaar at 780-968-8475 or by email at kelvin.vandasselaar@rehoboth.ab.ca

Fall Membership Campaign

A Rehoboth Membership Matters

Ten dollars doesn't get you much these days. It'll get you 10 stamps from Canada Post. Ten bucks will get you a single combo meal at Wendy's (but no upsized). Ten will get you a work-week's worth of Double-doubles from Timmy's.

A single 10-spot simply doesn't go far – unless you invest it in something more essential and longer-lasting than fast food or a coffee-on-the-go.

Why not take your \$10 and invest it in a Rehoboth Christian Ministries **Membership**?

Your \$10 membership, combined with memberships from Rehoboth supporters throughout Alberta – from Grande Prairie to Coaldale – becomes a powerful tool in the ministry to support adults with developmental disabilities. See the “Your donations dollars hard at work” article in this edition of *Flourish!*

What else does your \$10 membership do? It enables Rehoboth to:

- Help support individuals with disabilities and their families through effective, Christian-based programs and services
- Advocate for and support the needs, rights and abilities of people who live with disabilities.

- Strengthen our profile and performance as a major Christian service provider in Alberta

And as a member, you receive:

- Voting privileges for items presented at the Annual General Meeting or at Special Meetings
- Updates by various avenues describing Rehoboth's work and the flourishing of the individuals we support

Please consider becoming a new member, or renewing your annual membership.

The apostle James writes about true religion manifesting itself in how we care for those among us who are less fortunate or need greater assistance. Deuteronomy 24: 17-22 speaks of God's desire for his people to show justice and generosity toward them, so that giver and receiver may both be blessed.

Thank you for considering a Rehoboth Christian Ministries **Membership**. To make room for those with disabilities, to help them flourish!

Ron Bos

Executive Director

October is Membership Month:

Rehoboth Christian Ministries is completing membership drives in all of our supporting churches during the month of October. Keep an eye on your church bulletins for information about the campaign in your local church. Please give serious consideration to supporting the work of Rehoboth in its mandate not only to “make room” for our developmentally disabled friends but to also give them an opportunity to “flourish” in their respective lives and occupations!

Our membership goal this year is 4,000 members in our 40th year of service! We also hope to raise 125,000 dollars in donation revenue that can be used to directly enhance the lives of the individuals we are privileged to serve.

If you cannot participate in a local membership campaign you can donate online at: <https://www.rehoboth.ab.ca/donate/> or mail your cheque directly to our Administration Office:

Rehoboth Christian Ministries

3920 - 49 Avenue Stony Plain, Alberta, T7Z 2J7 attn: Membership

New Rehoboth Board Members



Janet Postma of Red Deer has been married to John for 32 years, and they have four adult children. They attend New Life Fellowship Church and are busily involved in church life. Mrs. Postma is the leader of the Red Deer Friendship Group, under the umbrella of First CRC in Red Deer. The Postma family has also served as respite caregivers of children and adults with disabilities for 20 years. Mrs. Postma has taught at Lacombe Christian School, Parkland School in Red Deer, as well as Horizon School in Olds. She currently teaches Grade 6 at St. Pat's Community School in Red Deer.



Alexander Van Geest grew up in a farming family in Taber, Alberta. He received a degree in Theology and History at Redeemer University College in Ancaster, Ontario before moving to Lethbridge in order to begin his current career in funeral service. Mr. Van Geest is now living and working as a Funeral Director in Ponoka. As a long standing member of the Christian Reformed denomination and a firm believer of helping those in need, Alex is honoured to be a member of the Rehoboth Board of Directors.

Gifts Gratefully Received:

This recognition is now on our website and will be updated on a regular basis. Check it out at www.rehoboth.ab.ca

Your Donation Dollars Are Hard at Work:

Rehoboth receives its primary funding from the Alberta government. These funds are applied for on an individual client by client basis. Money is provided for staffing, supervision, and limited administration overhead. Clients pay for groceries, utilities, transportation, and rent with the AISH funding they are eligible to receive. Rehoboth does not receive funding for capital projects, infrastructure, and office lease/rent costs. The Camp Program and its facilities do not receive any government support to operate.

As a non-profit agency, the quality of the service we are able to provide is based almost exclusively on donation dollars. The support of churches via designated collections, the proceeds of golf tournaments, the Membership Campaign, and donations through estate giving and wills are vital to the quality of service we are able to provide for our clients so that they can experience more than just the basics.

Camp:



The new mess hall is the focal point of a facelift that has been going on at camp this summer. This project has been supported by our members via the Raise the Roof Campaign, the Joyful Noise Choir 35 in 35 Appeal, and many corporate partners who have made significant contributions to this project by either donating or discounting the work they have completed on the site.

For many of the campers this is the only vacation they get to experience in a given year; for many families who themselves provide direct care it is the only week of vaca-

tion they get to experience. Camp is a quality service that touches many families and many lives. So the decision by the Rehoboth board and management to close camp this year to build the new mess hall did not come lightly.

Revenue from the Membership Campaign is also vital for this project. The board set aside \$100,000 of Membership Campaign funds to make this project a reality. This project could not have moved forward without your contributions.

Calgary Region:



Rehoboth Calgary completed the Snoezelen Room in July 2015. Snoezelen rooms provide a blend of sights, sounds, textures, and aromas. They create an environment that is safe and non-threatening which is meant to be explored and enjoyed. Participants experience a sense of control, autonomy, exploration, and reduced tension as this is a place free from the expectations of others and from the pressures of directed care. The benefits of Snoezelen rooms include the fact that they are client controlled.

“Pure” Snoezelen has no purpose other than enjoyment. Today, Snoezelen is used increasingly for education, therapy, stimulation, calming interaction and treatment of high or low affect. It provides a safe and comfortable atmosphere with freedom from pressure to achieve. Clients make choices and access to such rooms facilitate improved client/staff relationships and enhanced quality of life. This room is available for all our clients but they are particular-

ly beneficial for individuals diagnosed with Autism as they can provide many different types of experiences tailored to each person's like and dislikes.

This project was completed at a cost of 30,000 dollars that came directly from donation revenue from golf tournaments and membership.

Three Hills:

New to You is a shining example of bringing clients and the community together. With the sale of used clothing and furniture operational costs can be maintained. Running a volunteer community requires staffing dollars that the store revenue cannot maintain. Funds from donations and membership are designated to ensure this quality program can continue to operate allowing our individuals in Three Hills many opportunities to "flourish" as community volunteers and to develop job skills for potential employment.

The **Stony Plain Region** also operates a New to You clothing store that offers the same opportunities for clients to interact with the community while learning job skills.

Coaldale:

For many years the focal point of the Coaldale Program is the greenhouse and wood products that are produced for sale. Sales of plants and wood products offset the operational costs of the facility but the infrastructure and machinery required to produce these products cannot be sustained with sales revenue. The opportunities that are presented our clients in Coaldale makes Rehoboth one of the most sought after service providers in the South Region. This high level of recognition and support would not be possible without the fundraisers, donations, and Membership Campaign revenue.

Transportation:

Both Coaldale and Stony Plain day program facilities serve clients in other communities: Lethbridge and Spruce Grove, respectively. Clients coming to these programs do not receive funding to *get* to the program, only staff dollars to be *at* the program. There is no public transportation option available to these individuals. As a result

Rehoboth operates a bus service to get clients to our programs. Clients pay a transportation fee to help offset the operational cost of running busses but the upkeep, purchase, and continual maintenance of this fleet is a result of donation revenue. Without this vital service many clients would not be able to attend our day programs.

Computers in homes:

Technology is becoming a part of everyday life and current information is vital. Rehoboth is putting computer technology in all of our residential programs (50 homes) for staff to be able to access vital client information but to also complete the administrative portions of their job duties. These devices allow for more staff presence in the homes (rather than travelling to the branch office and working there), having a direct positive impact on client quality of care. Donation dollars are required to keep our supports in place and to ensure all the proper licensing for software is kept current.

Scholarship Program:

The most recent Golf Classic in Stony Plain set aside revenue for scholarships and bursaries for students attending college and university. Donation dollars are invested to develop and train future leaders for Rehoboth. It is vital that members of our supporting community prayerfully consider working in this field to ensure our clients continue to receive excellent care.

Safety Standards:

If you read the newspaper you will see that the homes our clients live in are becoming more institutional through various levels of government requirements. This could be a real crisis in the not too distant future if these demands for institutional type homes are not relaxed. For example, a client cannot live in a home that is not equipped with fire suppression systems. Donations and corporate support enable us to make significant safety improvements to our homes to better protect our clients.

Without donation revenue from our supporting community we would be unable to fulfill our mandate of "Serving people with disabilities. Helping them flourish."

Camp Facility Update



New Dining Hall

We are reaching the end of our work at camp where the focal point has been the new mess hall and kitchen. This new building is roughly three times the size of the old one. The dining room will seat 120 people, the kitchen has proper storage and prep areas, there is heat and cooling, washrooms and offices are now in the building as well. A new covered deck will become a great meeting place for camp users and the new overhead door will bring the outside in on warm sunny days! All in all a quantum leap forward from the building and conditions we experienced in the past.

This is not all that has happened at camp however; the closure of the facility also allowed for much needed work in the areas of infrastructure. These are items you may not see but certainly can and will experience.

In addition to the new mess hall facility we also added:

- New laundry facility
- New mechanical room and utility upgrades (gas, power, water, and septic)
- New pressure system (better showers!)
- New water treatment system
- Emergency power
- Better drinking water
- New covered deck (heated)
- RV dump station

The volunteer and camper experience next year will be completely different!

From Old... To New!



Old Mess Hall



New Mess Hall



Old Kitchen



New Kitchen



New Main Dining



New Mechanical Room

Donations Make A Difference



Making A Difference In Grande Prairie

Affordable housing options have always been a problematic and challenging issue over the years for persons with disabilities across the province of Alberta.

Private landlords have not held back in often inflating the costs of market rental accommodation during Alberta's economic boom years. This has created a significant problem for persons with disabilities on a limited government financial benefit (AISH) to pay current rental costs. Grande Prairie has certainly not been immune to this situation especially since this region is definitely in "oil country".

In 2009 a situation arose in the Grande Prairie program when five individuals needed appropriate and affordable housing. The Rehoboth Foundation stepped up to the plate and purchased a roomy duplex property while one family partnered by making a substantial donation towards the purchase of the property. This is a wonderful example of donation dollars making a real difference in the lives of the individuals we support so they can flourish.

Thank you so much for financially supporting this project in Grande Prairie!

Why we, the Stony Plain Region, are so grateful for you, the members of Rehoboth Christian Ministries:

Your financial support as a member enables Rehoboth to carry out its Christian mandate of supporting individuals with disabilities and their families through the development and delivery of effective programs and services.

But your membership dollars have a much more personal connection and are valuable in more ways than the average member knows. One way that your membership helps is that, in Stony Plain, our clients lack access to **public transportation** like they would find in a city. Therefore, when choosing a small town atmosphere and community they lose access to **affordable transportation** and the ability to commute independently. Your dollars help to change this; Rehoboth-Stony Plain has been able to purchase and maintain vehicles that transport our clients to and from the Vocational sites, recreational activities, and for transporting our competitively employed clients to their jobs. This is a game changer for the majority of the people we serve. It affords our clientele the same opportunities we all deserve and the freedom to participate in and contribute to society in a way that they would not be able to were it not for the transportation offered by Rehoboth. Transportation is an on-going struggle in our region but your membership dollars help ease this burden.

Your membership dollars also help promote fundamental aspects of Rehoboth, in this case strengthening the community and fellowship we strive to offer. Your dollars offset the cost of staff meals, allowing our staff to enjoy a time of fellowship with the individuals they serve.

Another example of your membership dollars at work is evident in the **training and recognition** we give our staff. Stony Plain region employs 200 people and we strive to ensure the training provided for our staff is meaningful, relevant, and effective, honouring our Christian roots. We are also able to recognize our employees' loyalty to Rehoboth and their hard work because of the dollars you faithfully provide as a member of Rehoboth Christian Ministries.

Coaldale Region Program Supports

It has been an amazingly warm summer here in sunny southern Alberta. We continue to see God blessing our region by bringing more people to us for service and more people coming into our shop for plants and patio/lawn furniture. We are also blessed with incredibly talented staff who have God given gifts and talents to share with all of us here.

It is also such a great experience seeing all of the supporters of Rehoboth here in the south who come to all of our functions and are fervent prayer warriors for all we do here. When we are challenged with policies from government or staffing changes or funding shortages their prayers are very real and are felt by those of us who need those prayers.

In the early spring we faced a **major funding shortfall** for one of our homes. We went to our funders with the government of Alberta and asked for an increase because some of the issues in the home were extreme. We suggested that we could not carry the cost of this home any further without additional staffing. The funders refused to budge on the cost increase and would not give any more to keep the doors open in this house. A date was set to close the home. This was a very stressful time for all involved. We had to serve notice to staff that there was no further work for them and that they would soon be out of their jobs. The families tried to get more funding but they were refused. They also approached the Board of Directors of Rehoboth. The board was aware of all the work that had been done to serve these wonderful individuals and all the training that we had put into staff that worked there. Three days before it was about to close the board made a final proposal to our funders that Rehoboth would contribute a certain amount of the shortfall if they would contribute as well. The Alberta government agreed to the proposal and the home stayed open.

How did this happen you might ask? It could only happen because of you, our membership. It could only happen because of the gifts that you give to this organization. Our board was able to use some of those dollars to keep this home going and that will allow us to continue to work with those young people in it with the purpose of giving them some tools to allow them to move forward in order to have better, perhaps more productive lives. The families involved in this home could not be more grateful to Rehoboth. Again none of this is possible without your memberships and gifts to our organization.

When we have visitors to our centre or to any of our homes that we operate they always say it is different. People in service seem to be happy, the staff seem to have a different attitude and it is more homelike than any other place they have been.

We are indeed a partner or a team in what we do. I like to call it our Rehoboth family. Rehoboth has been a big part of my family for nearly 30 years. I have seen many of you at various functions and churches. I believe God has put you and me along with everyone one at Rehoboth together to do his work. Over the many years it truly does feel like family. Your membership and support is so important. It means so much. It means that those who live in this country with developmental disabilities who are often marginalized have a place, a home and an extended family.

I pray for God to bless each and every one of you.

Alex B. Hann

Regional Director

Serving people with disabilities. Helping them Flourish.

Rehoboth Financial Policy

Spending of funds is confined to programs and purchases approved by the Rehoboth Board of Directors. Each donation that is designated toward an approved program will be used as designated with the understanding that when any given need has been met, designated donations will be used where most needed. All donations are acknowledged and receipted with a tax-deductible receipt.

Board of Directors:

From a governance perspective, Rehoboth Christian Ministries is led by a Board of Directors, whose members are elected to three year terms by the Society.

Currently, the board consists of:

- | | |
|----------------------------------|-----------|
| • Jim Braaksma (Calgary) | Director |
| • Brian de Haan (Edmonton) | President |
| • Stefan Dykema (Calgary) | Director |
| • Johan Knol (Coalhurst) | Director |
| • Janet Postma (Red Deer) | Director |
| • Brian Stoutjesdyk (Lethbridge) | Director |
| • Alexander van Geest (Ponoka) | Director |
| • Henry Van Steenberg (Edmonton) | Director |
| • Mike Wevers (Edmonton) | Director |

Operational Leadership:

The Leadership Team at Rehoboth consists of five regional directors, an operations director, and an executive director.

To plan effective service delivery in accordance with the direction of the Rehoboth Board of Directors, the Leadership Team meets face to face for two days, six times each year, in addition to teleconferencing and Skyping on an as-needed basis.

- | | |
|------------------------|-----------------------------------|
| • Ron Bos | Executive Director |
| • Debbie Dietz | Regional Director, Three Hills |
| • Karen Faint | Regional Director, Calgary |
| • Janice Gerbrandt | Regional Director, Stony Plain |
| • Alex Hann | Regional Director, Coaldale |
| • Barb Shumik | Regional Director, Grande Prairie |
| • Kelvin Van Dasselaar | Director of Operations |

Provincial Administration

3920 - 49 Avenue
Stony Plain, AB T7Z 2J7
Phone: 780-963-4044
Email: provincial_admin@rehoboth.ab.ca

Calgary Region

20, 3740 - 27 Street NE
Calgary, AB T1Y 5E2
Phone: 403-250-7333
Email: calgary_region@rehoboth.ab.ca

Three Hills Region

Box 602 / 523 Main Street
Three Hills, AB T0M 2A0
Phone: 403-443-2239
Email: threehills_region@rehoboth.ab.ca

Stony Plain Region

3920 - 49 Avenue
Stony Plain, AB T7Z 2J7
Phone: 780-968-4315
Email: stonyplain@rehoboth.ab.ca

Coaldale Region

Box 1312
Coaldale, AB T1M 1N1
Phone: 403-345-5199
Email: coaldale_region@rehoboth.ab.ca

Grande Prairie Region

Suite 1063, 9899 - 112 Avenue
Grande Prairie, AB T8V 7T2
Phone: 780-532-5611
Email: grandeprairie@rehoboth.ab.ca